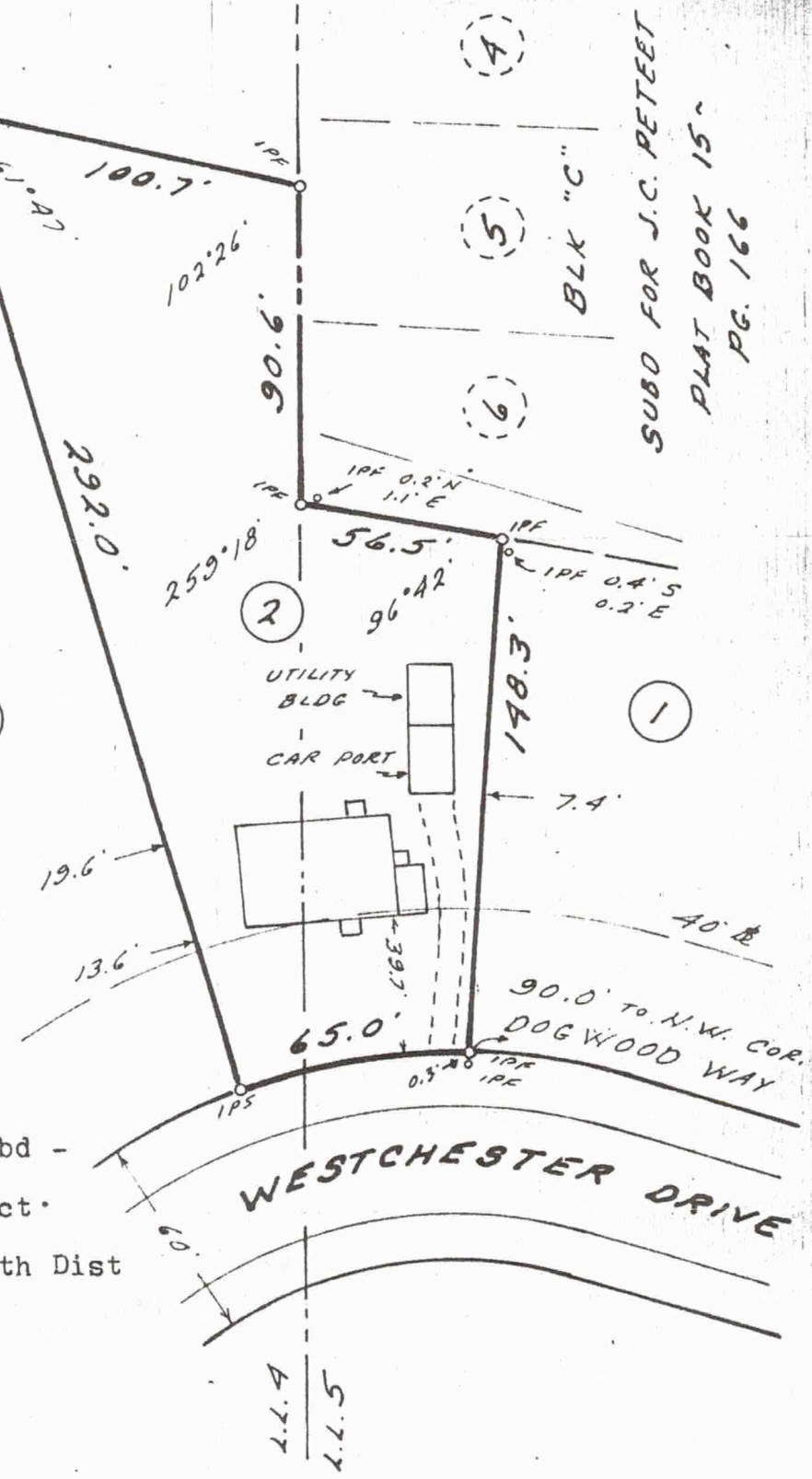


SEABOARD
AIR LINE R.R.
R/W

NOTE: House is
one story brick
405

SUBD FOR J.C. PETEET
PLAT BOOK 15
PG. 166

Survey for
DUNCAN F. &
JEANNE C. STEWART
Lot 2 - Blk "G"
Westchester Hills Subd -
Plat One - Fourth Sect.
Land Lots 4 & 5 - 18th Dist
DeKalb Co., Ga.
Scale: 1" = 50'
January 19, 1976



MERCER AND PATRICK

LAND SURVEYING • LAND PLANNING
SUBDIVISION ENGINEERING • CIVIL ENGINEERING

In my opinion, this plat is a correct representation of the land platted and has been prepared in conformity with the minimum standards and requirements of law.

C. S. Mercer, Jr.
C. S. MERCER, JR., R.P.L.S. No. 1185