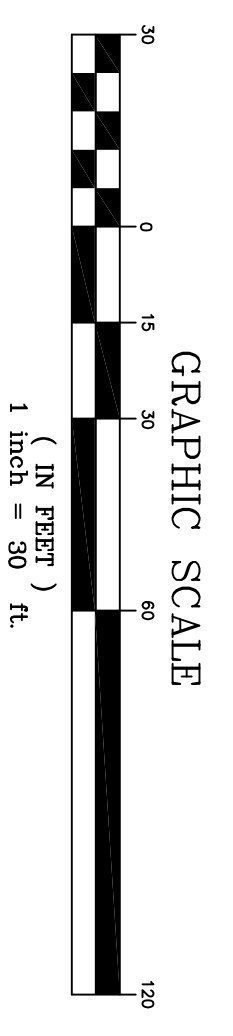
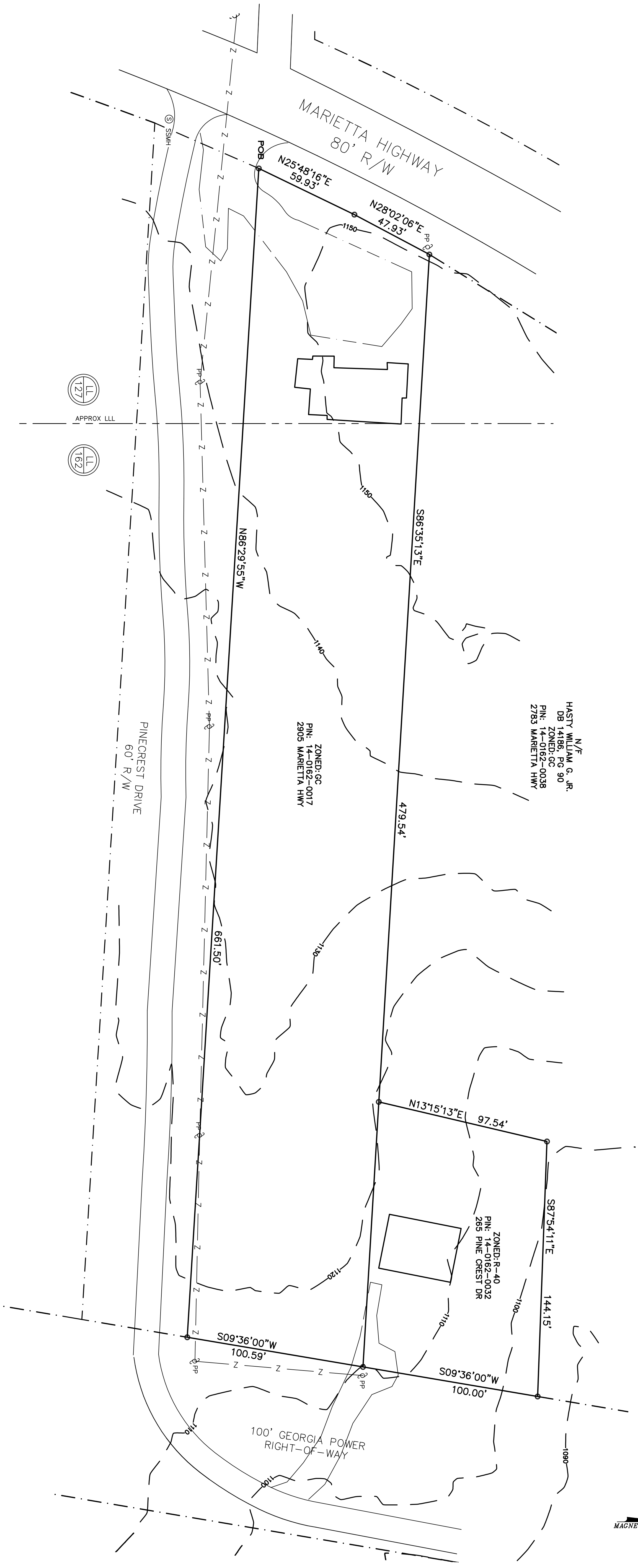


COMPOSITE PLAN FOR:
ROBERT HIGHTOWER
 2905 MARIETTA HIGHWAY
 LAND LOTS 127 & 162
 14th DISTRICT - 2nd SECTION
 CHEROKEE COUNTY, GEORGIA
 TOTAL AREA: 1.81± ACRES

N/F
 HASTY WILLIAM G. JR.
 DB 14186, PG 90
 ZONED: GC
 PIN: 14-0162-0038
 2783 MARIETTA HWY

ZONED: GC
 PIN: 14-0162-0017
 2905 MARIETTA HWY

ZONED: R-40
 PIN: 14-0162-0032
 265 PINE CREST DR



NO FIELD WORK BY FRONTLINE SURVEYING AND MAPPING, INC. AT THIS TIME IN THE PREPARATION OF THIS MAP. THIS MAP PREPARED FOR CONCEPTUAL PLANNING PURPOSES ONLY. THE INFORMATION CONTAINED HEREIN IS BASED ON THE INFORMATION PROVIDED TO FRONTLINE SURVEYING AND MAPPING, INC. BY THE CLIENT. FRONTLINE SURVEYING AND MAPPING, INC. DOES NOT WARRANT THE ACCURACY OF THE INFORMATION PROVIDED TO IT BY THE CLIENT. FRONTLINE SURVEYING AND MAPPING, INC. IS NOT RESPONSIBLE FOR ANY ERRORS OR OMISSIONS IN THIS MAP. ALL WARRANTIES PERTAINING TO THIS MAP ARE HEREBY DISCLAIMED.

COMPOSITE PLAN FOR:		DATE	02/19/2021
ROBERT HIGHTOWER		SCALE	1" = 30'
LAND LOT 127 & 162	14th DISTRICT 2nd SECTION	CHEROKEE COUNTY, GEORGIA	
LOT 106 & PART 107	BLOCK UNIT	REVISION BY: DATE:	
SUBDIVISION: RICH ESTATE - CANTON COPPER MINE PROPERTY			
SURVEYED:			
COMPUTED:			
APPROVED:			

DATE	02/19/2021
SCALE	1" = 30'
CHEROKEE COUNTY, GEORGIA	
REVISION BY: DATE:	
SUBDIVISION: RICH ESTATE - CANTON COPPER MINE PROPERTY	
SURVEYED:	
COMPUTED:	
APPROVED:	



FRONTLINE SURVEYING & MAPPING, INC.
 3595 Canton Road, Bld. Suite 312, Ste. 272, Marietta, GA 30066
 TELEPHONE (678) 355-9905 FAX (678) 355-9805

JOB # 74237

PB 29 PAGE 163
 DB 14183 PAGE 725

www.frontlinesurveying.com